



FALL PROTECTION SYSTEM



TOOLWAY

Head Office: 1-280 Hunter's Valley Road, Woodbridge, ON, Canada L4H 3V9 | Phone: (905) 326-5450 | Fax: (905) 326-5451
Montreal: 1868 Blvd. Des Sources, Suite 115, Pointe-Claire, QC, Canada H9R 5R2 | Phone : (514) 630-5130 | Fax: (514) 695-1761

TWXpert® Fall Protection System is the Professional choice for all roofers and/or those who have to work at height in a safe and supported hands-free position, providing maximum Safety, Comfort & Flexibility. Our high quality line of Safety Equipment includes from full body harnesses with and without padding, shocking absorbing lanyards, work position lanyards, vertical lifelines with fall arrestor, rope grabs & anchors, all certified to CSA standards.

The single user full body harnesses serve to better distribute the forces of a fall to suitable areas of a body and keep the body upright should a fall occur. Ergonomic design for a proper fit with additional padding on the waist helps to reduce both the carried weight and the required energy for all-day job performance.

All straps are made from pure, non-recycled 100% polyester material having the strength, aging, abrasion and heat resistance characteristics. All structural stitching patterns are of high breaking strength 6000lb to keep you safe, secure and supported.

The hardware used on the system as hooks, D-Rings, adjustable buckles, tongue buckles and grommets are made of alloy steel with gold galvanized plating to prevent rusting.

TWXpert® Fall Protection System HAS YOUR BACK with a complete array of products to use together always thinking on your COMFORT & SAFETY.



WEBBING:

100 % Polyester webbing.
UV treated & abrasion resistance
Breaking strength of 6000lb.



PADDING:

Pressed shock absorbing EVA foam,
polyester fabric and vented mesh.
Ergonomic design for a proper fit.



HOOKS:

Gold galvanized plating to prevent rusting.
Breaking strength of 5000lb/22.2KN.



D-RING:

Made of alloy steel with gold galvanized
plating to prevent rusting.
Breaking strength of 5000lb/22KN



TONGUE BUCKLES:

Made of alloy steel with gold galvanized
plating to prevent rusting.
Breaking strength of 4000lb/18KN



ADJUSTABLE BUCKLES:

Made of alloy steel with gold galvanized
plating to prevent rusting.





FULL BODY SAFETY HARNESS - PADDED



This TWXpert® Full Body Safety Harness is the Professional choice for all roofers and/or those who have to work at height in a safe and supported hands-free position, providing maximum Safety, Comfort & Flexibility. The Full body harnesses serves to better distribute the forces of a fall to suitable areas of the body and keep the body upright should a fall occur. Ergonomic design for a proper fit with additional padding on the waist helps to reduce both the carried weight and the required energy for all-day job performance.

TWXpert® Harnesses are designed and tested to comply with applicable CSA standards for fall protection equipment when used as a component in a personal fall arrest system or personal restraint system.

- Designed for a single user with combined weight up to 352lb, including clothing, tools and equipment.
- All straps are made of 100 % Polyester webbing, UV treated & abrasion resistance, with a breaking strength of 6000lb.
- 3 D-Rings attachments with a breaking strength of 5000lb/22KN, one dorsal D-ring to match any foreseeable fall arrest working condition, two waist D-rings for better work position only.
- Ergonomic design for a proper fit with additional padding on the waist helps to reduce both the carried weight and the required energy for all-day job performance.
- The padding is made of pressed shock absorbing EVA foam, polyester fabric and vented mesh.
- 3 tongue buckles with a breaking strength of 4000lb/18KN and grommet adjustment on the waist & leg straps for quick fastening and easy adjustment providing both easy operation and safety.
- 2 adjustable buckles on the shoulder straps.
- 2 lanyard parking attachment, breaking under 120lb.
- Regular mating buckles on the chest strap.
- Two fall indicators on the back torso straps.
- One size fits all – Fully adjustable.
- **CERTIFIED TO CSA Z259.10-2018 STANDARDS.**



FULLY ADJUSTABLE

**CONVENIENT CARRY
AND STORAGE BAG**



3 TONGUE BUCKLES:
Breaking Strength Of
4000lb/18KN



3 D-RINGS:
Breaking Strength Of
5000lb/22KN



WAIST PADDING



MATING BUCKLES



ITEM	DESCRIPTION	CASE	MOQ
105715	Full Body Safety Harness-Padded	4	1 - 8
			9-24
			25-48

FULL BODY SAFETY HARNESS - BASIC



This TWXpert® Full Body Safety Harness is the Professional choice for all roofers and/or those who have to work at height in a safe and supported hands-free position, providing maximum Safety, Comfort & Flexibility. The Full body harnesses serves to better distribute the forces of a fall to suitable areas of the body and keep the body upright should a fall occur. Ergonomic design for a proper fit.

TWXpert® Harnesses are designed and tested to comply with applicable CSA standards for fall protection equipment when used as a component in a personal fall arrest system or personal restraint system.

- Designed for a single user with combined weight up to 352 lb, including clothing, tools and equipment.
- All straps are made of 100 % Polyester webbing, UV treated & abrasion resistance, with a breaking strength of 6000lb.
- 1 dorsal D-Ring attachment to match any foreseeable fall arrest working condition with a breaking strength of 5000lb/22KN.
- Ergonomic design for a proper fit.
- 5 adjustable buckles, on the shoulder, chest & leg straps.
- 2 lanyard parking attachment, breaking under 120lb.
- Regular mating buckles on the chest strap.
- Two fall indicators on the back torso straps.
- One size fits all – Fully adjustable.
- **CERTIFIED TO CSA Z259.10-2018 STANDARDS.**



1 D-RINGS:
Breaking Strength Of
5000lb/22KN



MATING BUCKLE



WEDDING:
100% Polyester
webbing



**5 ADJUSTABLE
BUCKLES:**



**CONVENIENT CARRY
AND STORAGE BAG**



ITEM	DESCRIPTION	CASE	MOQ
105710	Full Body Safety Harness-Basic	8	1 - 8
			9-24
			25-48



3PC ROOFERS FALL PROTECTION KIT



This TWXpert® Roofers Harness Kit is the Professional choice for all roofers and/or those who have to work at height in a safe and supported hands-free position, providing maximum comfort and flexibility.



CONVENIENT STORAGE BUCKET

COMPLETE FALL PROTECTION KIT

INCLUDES

- 105710: Full Body Safety Harness-Basic
- 105718: Vertical Lifeline with Fall Arrestor
- 105730: Reusable Roof Anchor with Screws



105710



105718



105730

ITEM	DESCRIPTION	CASE	MOQ
105709	3PC Roofers Fall Protection Kit	1	1 - 12
			13-24
			25-48

SHOCK ABSORBING LANYARD



This TWXpert® Shock Absorbing Lanyard is a specific type of safety lanyard used in conjunction with safety harnesses as a part of a fall protection system. Generally, shock absorbing lanyards are used when working at a height of more than six feet above the ground. The unique feature of a shock absorbing lanyard is that it has a built-in woven inner core that expands during the fall to ensure that the fall arrest force is significantly reduced.



Weight Range (Including Tools):
180-310 lb (81.7-140 kg)
 Maximum Free-Fall Distance: **6ft (1.8 M)**

- Single leg internal shock absorbing lanyard.
- Features a steel snap hook and rebar hook, one on each end.
- The hooks are alloy steel with gold galvanized plating to prevent rusting with a breaking strength of 5000lb/22.2KN.
- **CERTIFIED TO CSA Z259.11-2017 STANDARDS**

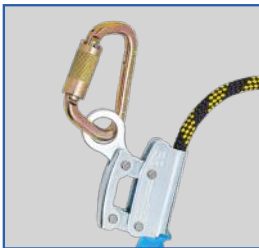
ITEM	DESCRIPTION	CASE	MOQ
105716	Shock Absorbing Lanyard	12	1 - 12
			13 - 24
			25-48



WORK POSITION LANYARD WITH ROPE GRAB



This TWXpert® Work Position Lanyard With Rope Grab is a part of a device system. This type of system supports the worker on a elevated vertical surface, such as wall or pole. This allows them to work hands free while leaning. The lanyard connects the worker to an anchor point in front of their body. It's 13mm kernmantle rope has the interior core protected by a woven exterior sheath designed to optimize strength, durability, and flexibility. The core fibers provide the tensile strength of the rope, while the sheath protects the core from abrasion during use.



- Rope type work position lanyard with a steel rope grab for length adjustment.
- Features a steel snap hook and steel carabiner, one on each end.
- The hooks are alloy steel with gold galvanized plating to prevent rusting with a breaking strength of 5000lbs/22.2KN.
- Diameter 13mm kernmantle rope. The core fibers provide the tensile strength of the rope, while the sheath protects the core from abrasion during use.
- Maximum length: 2m.
- **CERTIFIED TO CSA Z259.11-2017 STANDARDS.**

Weight Range (Including Tools):

180-310 lb (81.7-140 kg)

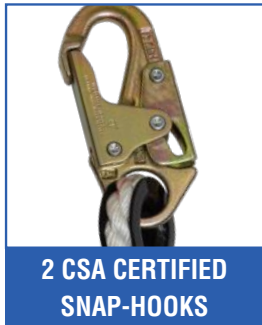
Maximum Free-Fall Distance: **6ft (1.8 M)**

ITEM	DESCRIPTION	CASE	MOQ
105717	Work Position Lanyard With Rope Grab	12	1 - 12
			13 - 24
			25-48

VERTICAL LIFELINE WITH FALL ARRESTOR



TWXpert® Vertical Lifeline is an important part of the fall protection system for workers using fixed ladders or similar climbing surfaces that are part of a structure, such as water tanks and antenna workers. This Vertical Lifeline allows the worker to move up and down the entire height of the line in a safe manner, rather than having to disconnect and find a new tie-off-point. This equipment is designed for one person with a combined weight (person, clothing, tools, etc.) of no more than 310lb. The Fall Arrestor offers significant freedom of movement for workers to carry out their assigned duties while preventing them from falling when they're working above the ground.



Breaking Strength:
6000 lb

- Vertical lifeline with fall arrestor & manual rope grab.
- 2-Snap hooks 16KN (3600lb) gate strength, one on the fall arrestor and one on the top for anchorage.
- The hooks are alloy steel with gold galvanized plating to prevent rusting with a breaking strength of 5000lb/22.2KN.
- 3-Strand polyester/polypropylene blend water proof rope Ø: 5/8".
- Fall arrestor lanyard elongation under 8KN less than 8%.
- Integral fall arrestor (0.75m length) with a anti-panic rope grab.
- Park feature – manually operated feature of the fall arrestor that holds it in place on the lifeline.
- **CERTIFIED TO CSA Z259.2.5-2017 STANDARDS.**

ITEM	DESCRIPTION	CASE	MOQ
105718	Vertical Lifeline with Fall Arrestor	6	1 - 6
			7 - 24
			25 - 48



PANIC ROPE GRAB



TWXpert® Panic Rope Grab is used as a component of fall arrester and should be use with a 16mm (5/8 inches) rope only and a connecting lanyard not longer than 76cm (30in). The Alloy steel material with gold galvanized plating, prevents rusting and provides a minimum breaking strength of 3600lb / 16KN.

- Use as a component of fall arrester with 105718 16mm (5/8in) rope only, the connecting lanyard should not be longer the 76cm (30in) according to requirement with CSA Z259.2.5-2017.
- Alloy steel with gold galvanized plating to prevent rusting.



 Minimum Breaking Strength:
300 lb (136 kg)

ITEM	DESCRIPTION	CASE	MOQ
105725	Panic Rope Grab	15	1 - 15
			16 - 30
			31 - 45

REUSABLE ROOF ANCHOR WITH SCREWS



TWXpert® Reusable Roof Anchor is manufactured from zinc plated steel and includes holes for fastening the anchor with the included fasteners. It must be installed as a temporary anchor point on wood composition roof tops or stable locations that are strong enough to support the falling weight of a worker attached to the PFAS. Fits up to 12/12 roof pitch and it's limited to one person only, with a maximum total combined weight of 310 lb, including the user's tools and equipment. This anchor may be re-used provided it is carefully removed, inspected and installed. Use only the supplied 9 cm nails.

The personal fall arrest system for use with the TWXpert® Roof Anchors must be arranged so that the Maximum Free Fall (MFF) distance is no greater than 6ft. However, local regulations may limit MFF to a lower value. Consult your local regulatory requirements.



Rated Strength:

5000 LB

- Durable zinc plated steel.
- Includes 10 fasteners of 9 cm.
- Fits up to 12/12 roof pitch.
- Capacity 310lb including tools and equipment.
- For use on wood composition roof tops.
- Temporary and reusable.
- Easy installation.

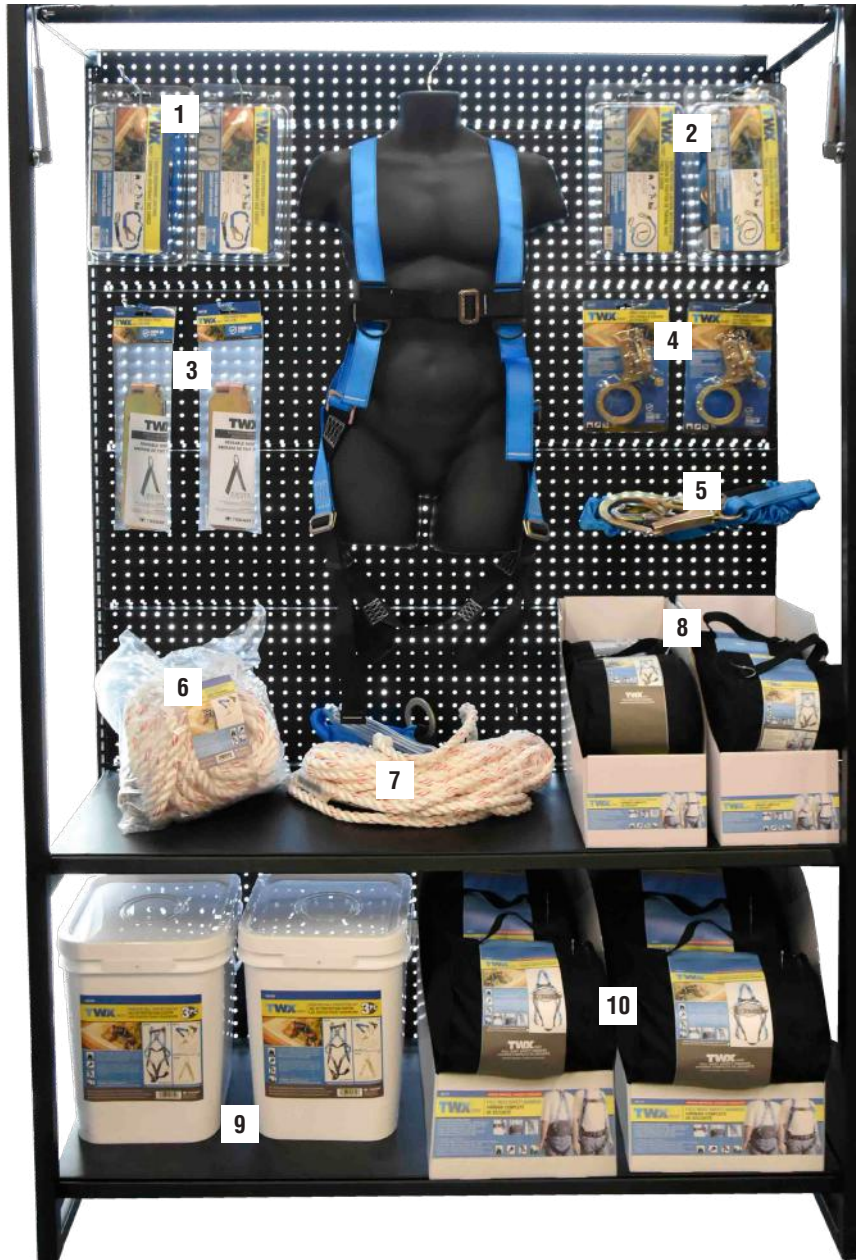


Include
10 Screws

Simple hinge-style design is extremely easy to transport, install, dismantle and store.

ITEM	DESCRIPTION	CASE	MOQ
105730	Reusable Roof Anchor with Screws	20	1 - 20
			21 - 40
			41 - 60

FALL PROTECTION SYSTEM - PLANOGRAM 01



DISPLAY NOT INCLUDED

1	105716	Shock Absorbing Lanyard
2	105717	Work Position Lanyard With Rope Grab
3	105730	Reusable Roof Anchor with Screws
4	105725	Panic Rope Grab
5	105716	Shock Absorbing Lanyard
6	105718	Vertical Lifeline with Fall Arrestor
7	105718	Vertical Lifeline with Fall Arrestor
8	105710	Full Body Safety Harness-Basic
9	105709	3PC Roofers Fall Protection Kit
10	105715	Full Body Safety Harness-Padded

FALL PROTECTION SYSTEM - PLANOGRAM 02



1	105716	Shock Absorbing Lanyard
2	105717	Work Position Lanyard With Rope Grab
3	105730	Reusable Roof Anchor with Screws
4	105725	Panic Rope Grab
5	105716	Shock Absorbing Lanyard
6	105718	Vertical Lifeline with Fall Arrestor
7	105718	Vertical Lifeline with Fall Arrestor
8	105710	Full Body Safety Harness-Basic
9	105709	3PC Roofers Fall Protection Kit
10	105715	Full Body Safety Harness-Padded

DISPLAY NOT INCLUDED

FALL PROTECTION SYSTEM - PLANOGRAM 03



DISPLAY NOT INCLUDED

1	105725	Panic Rope Grab
2	105717	Work Position Lanyard With Rope Grab
3	105730	Reusable Roof Anchor with Screws
4	105725	Panic Rope Grab
5	105716	Shock Absorbing Lanyard
6	105730	Reusable Roof Anchor with Screws
7	105715	Full Body Safety Harness-Padded
8	105718	Vertical Lifeline with Fall Arrestor
9	105710	Full Body Safety Harness-Basic
10	105709	3PC Roofers Fall Protection Kit